

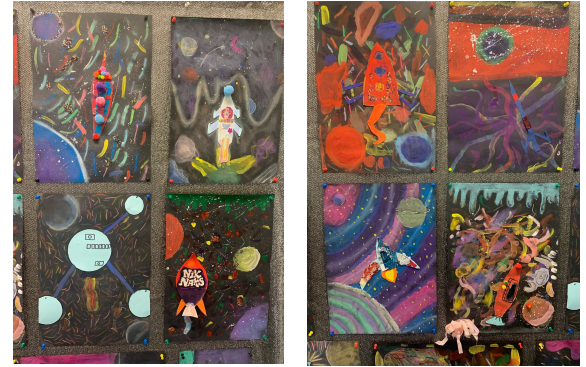


JYS News

Newsletter: 17 ~ 24th February 2023 Aspire ~ Respect ~ Enjoy

How we do it as JYS!

At Jessie, we pride ourselves on having an imaginative and creative curriculum. Our teachers push themselves to make learning fun and engaging for all. On Friday 10th February, you may have seen lots of green figures arriving at school - this was because Year 5 were having an "Alien Day" to celebrate the topic of "Space... and beyond!" for that half term. A visit to the Southdown's Planetarium, creating art work inspired by artist Peter Thorp, designing their own aliens - and even making their own green slime! - are just some of the ways that we have inspired our pupils to learn more about our solar system - and what is beyond!



This week

Year 5 welcomed Paul Ullson back again on Tuesday this week, where he led a session about the Saxons and Vikings - a very different topic to Space from last half term!

Wednesday was very busy, as Year 3 headed off on a coach to Butser Ancient Farm in Waterlooville to support their learning. In spite of the wet weather and cold, the children had a fantastic day. One of the highlights was being in the straw-topped round house with an open fire!

Whilst Year 3 were out, Year 6 walked down to Bishop Luffa to join 8 other schools in an inter-school competition: Sportshall Athletics. The children were split to go and compete in different events to score points for the school's total. We are delighted to report that we came 6th, and the children supported and encouraged each other throughout the day.

Important Dates Coming Up

- Friday March 3rd - World Book Day Celebrations
- Friday 17th March - Comic Relief
- Friday 24th March - Quiz Night for Parents (details to follow)
- Friday 31st March - Last day of Spring Term
- Monday 17th April - Summer Term Begins
- Friday 28th April - TT Rockstar Day (details to follow)
- Monday 5th June - INSET Day (School shut to pupils)
- Thursday July 20 - Last day of term

House Points

Children earn house points for different things throughout the week, and here are the weekly results:



	This week	Total (Since Jan '23)	Total (Since Sept '22)
Ash	58	625	2106
Beech	54	553	1926
Maple	83	766	2164
Oak	71	758	2200