



VISION

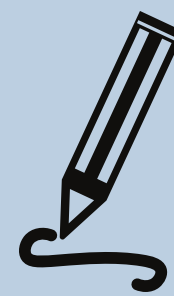
At Jessie Younghusband School our vision is to inspire and nurture the individuality of every member of our school community. We aim to fully support each pupil to achieve success at all stages of their life by instilling confidence, resilience and ambition through our shared values.

Aspire ~ Respect ~ Enjoy



READING

EARLY READING AND PHONICS ARE BEING DELIVERED CONSISTENTLY THROUGH THE USE OF OUR NEW PHONICS SCHEME. A LOVE OF READING IS PROMOTED THROUGH HIGH QUALITY BOOKS.



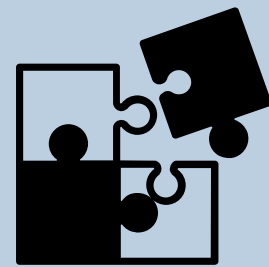
BASIC SKILLS

HANDWRITING AND SPELLING TO BE TAUGHT IN A CONSISTENT MANNER ACROSS EACH KEY STAGE TO DEVELOP THE QUALITY ACROSS THE SCHOOL

$2+2=4$

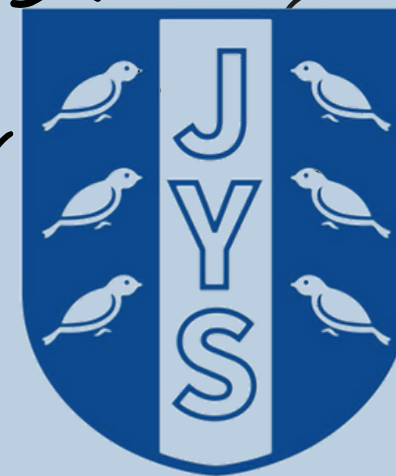
NUMBER

FOR JYS TO WORK WITH THE SUSSEX MATHS HUB TO FURTHER DEVELOP OUR OFFER IN MATHS. FOR ALL CHILDREN TO HAVE REGUALR BASIC NUMBER SESSIONS TO IMPROVE FLUENCY.



CURRICULUM

TO HAVE AN AMBITIOUS, BROAD AND BALANCED CURRICULUM IS FIRMLY IN PLACE, WITH CLEAR LONG AND MEDIUM TERM PLANS THAT FOLLOW OUR 'LEARNING PATHWAYS' ARE UNDERSTOOD BY ALL.



CURRENT PRIORITIES



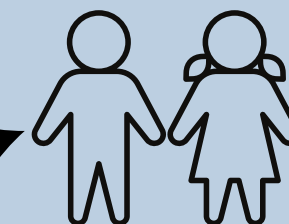
PARTNERSHIP

PARENTS AND SCHOOL WORK CLEARLY IN PARTNERSHIP, BUILDING UPON THE RELATIONSHIPS AND SUPPORT PARENTS HAVE PROVIDED DURING THE PANDEMIC. WORKSHOPS ARE A REGULAR FEATURE AND ENABLE PARENTS TO SUPPORT PUPILS AT HOME.



SEN

TO WORK IN PARTNERSHIP TO ENSURE A CLEAR UNDERSTANDING OF THE NEEDS OF OUR MOST VULNERABLE LEARNERS AND HAVE STRATEGIES AND SUPPORT IN PLACE TO ENSURE THESE PUPILS CAN ACCESS LEARNING.



EARLY YEARS

BUILD UPON THE CURRENT STRONG PRACTICE IN EYFS, BY LOOKING AT DIFFERENT LAYOUTS, RESOURCING AND FURNITURE TO FURTHER ENHANCE THE ENVIRONMENT FOR PUPILS.